

MAP info

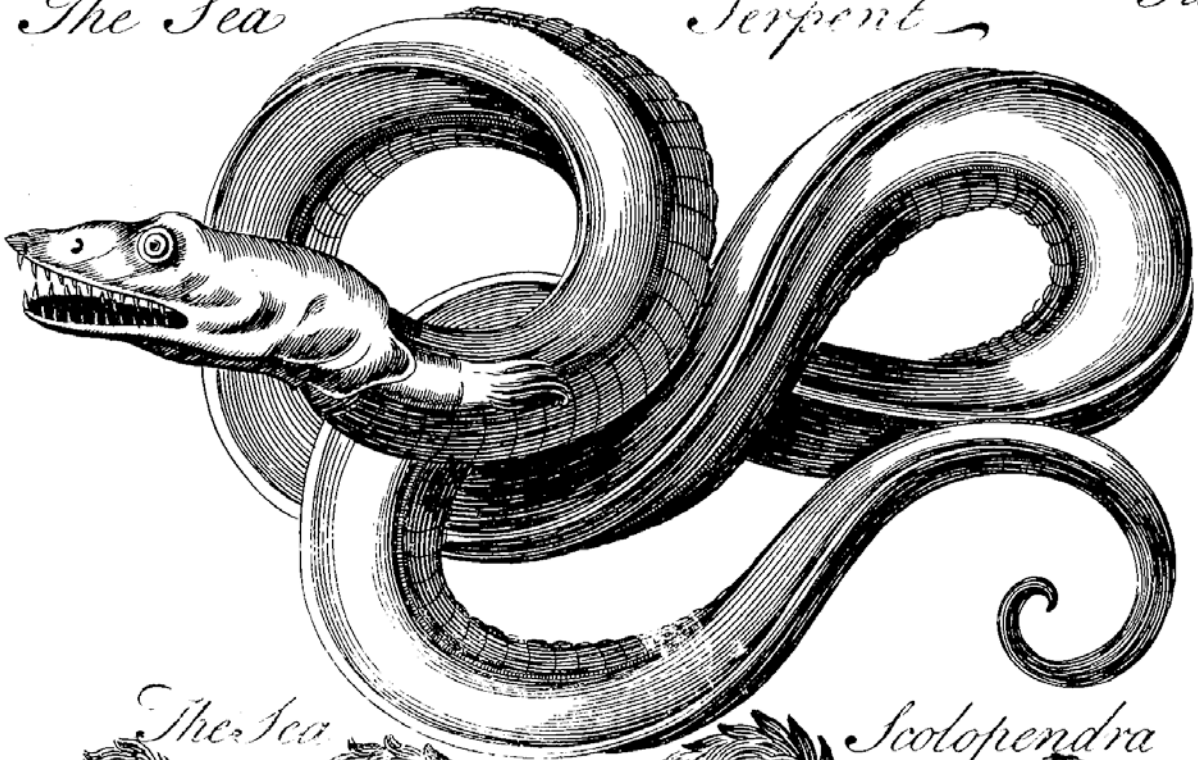
1. 188b St Lucy Street. ECOTRACO  
Main Exhibition space of "THE SNAKE SHOW"  
Open  
3.2. - 11.2. 2018  
2PM - 7PM (TUE - SUN)
2. St. Lucy Street: just outside of exhibition space:  
SNAKE PLANT/ Sansevieria trifasciata.  
Booklet NR. 68
3. San Paolo Naufrago. BAR  
Inside a lovely painting of the Shipwreck as well as reproduction of "An itinerant medicine vendor performing with a snake", Booklet NR. 26
4. St Lucy Street close to Piadina  
Snake Relief in balcony - look at first floor balcony
5. St Lucy Street.  
Entrance to visit the church SAN PAUL SHIPWRECK.  
Have a look at their notice board and the picture of the relic.
6. LOOK UP. there is a Paul on the church!
7. Max Stivala. Snake in Shape.  
Booklet NR. 39
8. Cafe Society: How to hold a snake
9. BILLBOARD  
The world as an egg. Booklet NR. 60
10. BILLBOARD left  
Anna Block  
Untitled from ongoing Elements-project  
Booklet NR. 7
11. St Paul Street: SAULUS Shop.  
SAULUS Shop. Paulus was called Paulus before he was converted.
12. St Paul Street: Il-Gifen  
St. Paul Street opposite S.Paul church: Niche with Immaculate conception - in fact St. Paul's Street is full of snake symbols!
13. St Paul Street: DOMUS PAULI museum. A fine museum which hosts the collection of Pawlini objects
14. St Paul Street: Francis Meli shop  
Virtu della Pietra. Reproduction Leaflet
15. Archbishop Street Nr. 144. "The smart Millnery".  
Sharon Kivland "The Good Readers"

PARCOURS in frame of THE SNAKE SHOW:  
A FRAGMENTA exhibition.  
Supported by the Valletta 2018 Foundation.

*The Sea*

*Serpent*

*Plate 6<sup>th</sup>*



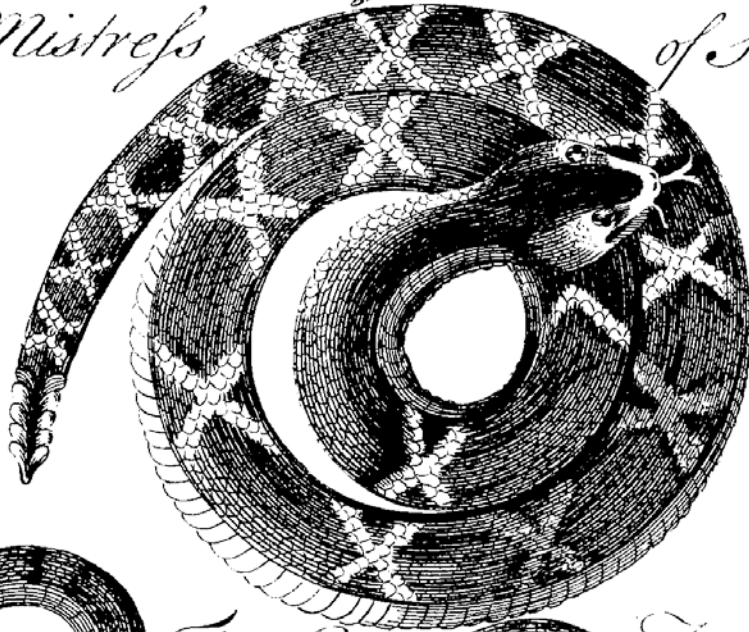
*The Sea*

*Scolopendra*



*The Mistress*

*of Serpents*



*The Natrix*

*Torquata*